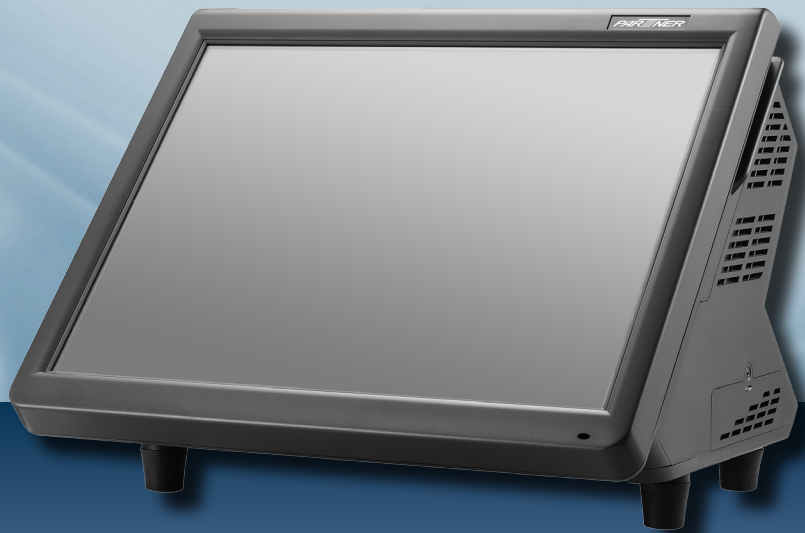


PARTNER

CARE . TRUST . RESPONSIBILITY

PT-6215-EB

All-in-one Touch POS Terminal PT-6215-EB Be flexible and independent



The PT-6215-EB All-in-One POS Touch Terminal is the perfect solution for all kind of businesses.

The compact and elegant design fits into every environment installation and is extremely counter space saving.

As the PT-6215-EB is an All-in-One Terminal, it can be easy installed without extra modules, cables etc.

It is the perfect POS Terminal for everyone who wants to be independent and flexible.

Special Features

- Elegant, compact and fanless design
- 15" TFT-LCD touch screen
- Open architecture
- Modular design for easy maintenance
- Integrated 3-track MSR
- 80 mm Epson thermal printer
- 2x20 VFD customer display

Optional

- Solid State Drive
- RAID
- RFID Module
- WiFi Module
- Dallas-Button / Addimat-Lock

All-in-one Touch Terminal PT-6215-EB

Technical data

Item	PT-6215-EB	
CPU	Intel®Atom™ D525 @ (1M L2 Cache, 1.80 GHz, dual core)	
Chipset	Intel NM10	
Memory	System ships with DDR3 1GB std, support up to 4 GB	
LCD	15" TFT-LCD	
Resolution	1024 x 768	
Touch	5-wire resistive touch	
LCD Brightness	250 cd/m2 (w/o touch)	
LAN	10/100/1000Mbps on board Ethernet controller	
Storage	IDE 3.5" HDD Supports 2nd HDD (option) SATA SSD (option)	
I/O ports	External 4 x COM Internal 2 x COM Internal 1 x LPT External 4 x USB 2.0 Internal 2 x USB 2.0	
Operation System	Linux (ubuntu, Fedora), POSReady 2009, POSReady 7, Windows 7, Windows XP	
Power Supply	AC 100 V~240 V / DC 12V / 15 A 180 watt power adaptor	
Environment	Operating	Storage
	Temperature	0~40 °C C -20~60 °C
	Humidity	15% ~ 80% 15% ~ 80%
Dimension	345 mm (W) x 321 mm (D) x 256 mm (H)	
Integrated Peripherals	3-Track MSR, 2 x 20 VFD customer display, 80 mm Thermal Epson printer with auto cutter	
Options	Solid State Drive, Raid, RFID module, WiFi module, Dallas-Button / Addimat-Lock	



15" TFT-LCD Touchscreen



3-Track MSR



80mm Epson thermal printer with auto cut and paper feed



Compact and small footprint



Rear VFD customer display

